



**Maricopa County Community College District  
Governing Board Minutes  
December 5, 2017**

Agenda Review and Annual Monitoring Report Retreat of the Maricopa County Community College District Governing Board were scheduled to be held beginning at 4:00 p.m. at the District Support Services Center, 2411 West 14th Street, Tempe, Arizona, pursuant to ARS §38-431.07, notice having been duly given.

**GOVERNING BOARD**

Laurin Hendrix, President  
Linda Thor, Vice President  
Alfredo Gutierrez, Member  
Johanna Haver, Member  
Jean McGrath, Member  
Dana Saar, Member

*Absent*

Tracy Livingston, Member

**ADMINISTRATION**

Maria Harper-Marinick  
Debbie Kushibab  
Karla Fisher  
Gaye Murphy  
LaCoya Shelton  
Ed Kelty  
Christina Scultz  
Leslie Cooper

Bill Guerriero  
Ernie Lara  
Steven Gonzales (Absent)  
Terry Leyba Ruiz (Absent)  
Sasan Poureetezadi  
Paul Dale  
Chris Haines  
Chris Bustamante  
Jan Gehler  
Shari Olsen

**AGENDA REVIEW**

Agenda Review Agenda Review called to order at 4:03 p.m.

Board President Hendrix then took the assembly through the proposed agenda for the December 12, 2017 Regular Board Meeting. Board members asked for clarification on the following items.

**CONSENT AGENDA**

**• Item 8.4 Approve Rio Salado College Student Success and Scaling Initiative**

- A Board member asked if this would fulfill the Governing Board goal set for the Chancellor to expand Rio Salado nationally. [Yes, the Chancellor is working with the college president and staff on a plan to yield outcomes in the RFP process to support the goal and infrastructure. This action item asks for Board support to move forward.]
- A Board member asked if subcontractor Ins and Outs will use social media for marketing. [Ins and Outs will provide direct marketing activities, including using social media.]

- **Item 8.5 Approve Designee Related to Unemployment Compensation Information**
  - A Board member asked if this apparatus would allow MCCCDC to track students after graduation. [Yes, this will offer an opportunity to access DES data on student wages.]
- **Item 9.1 Approve Curriculum**
  - A Board member asked for clarification on what IPH stands for. [Introduction to Public Health (IPH); course information is detailed on page 8 of the curriculum packet.]
- **Item 9.2 Approve Transfer from Maricopa Community Colleges Foundation—New Grant Award Charting Clear Routes to Completion: Achieving Deeper Learning While Saving Students Time and Money Implementation Grant**
  - A Board member asked if this had anything to do with increasing the academic advisement and pathways initiative. [The purpose is to assist faculty in mapping work by providing stipends for summer work.]
  - A Board member asked why faculty would be traveling as part of this grant. [Grant parameters stipulate that grantees must share what they have learned by presenting at conferences.]
- **Item 9.3 Approve Intergovernmental Agreement with Mesa Unified School District No. 4 for College Advisors Program**
  - A Board member asked if we had agreements similar to this with other school districts. [Mesa is the first and is acting as a pilot for this type of program.]
- **Items 10.2 Approve Agricultural Lease with H Four Farm III and 10.4 Approve Agricultural Lease with Rexco, LLC**
  - A Board member asked for verification that the agricultural leases are market driven. [Yes, they are market driven.]

**ADJOURNMENT**

Agenda Review adjourned at 4:18 p.m.

**ANNUAL MONITORING REPORT**

Annual Monitoring Report Retreat called to order at 4:30 p.m. and Board President Hendrix asked the Chancellor, Dr. Maria Harper-Marinick, to present. Board members asked for clarification on details provided in the report, which the Chancellor addressed directly, such as:

- How is MCCCDC's \$26M investment going to influence these data?
  - Increased persistence, completion, and transfers. Improved developmental education.
- How do we increase our services and entice the quarter of Maricopa's population living in poverty?

- Some answers remain the same: provide access to childcare, transportation, food, and security. Some places MCCCCD can influence, in others MCCCCD can collaborate with existing services to provide support. MCCCCD cannot do it all but it can work with other agencies to ensure this population can have access to higher education.
- How have changing start times affected ability to serve special populations?
  - It is helping to have late start classes, shortened semesters, and multiple start dates. Creating a sustainable model the entire system can use will help.

Dr. Harper-Marinick then asked Mr. Kerry Mitchell to demonstrate the Tableau web interface that will allow the Governing Board to access all the data and run reports on demographics themselves.

Copies of the presentation are included after the minutes.

**ADJOURNMENT**

The Annual Monitoring Report Retreat adjourned at 5:40 p.m.

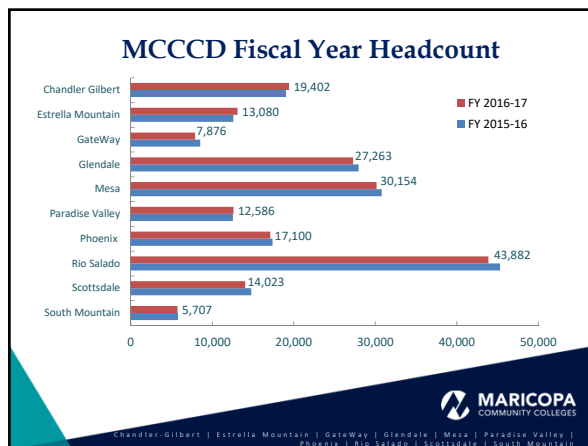
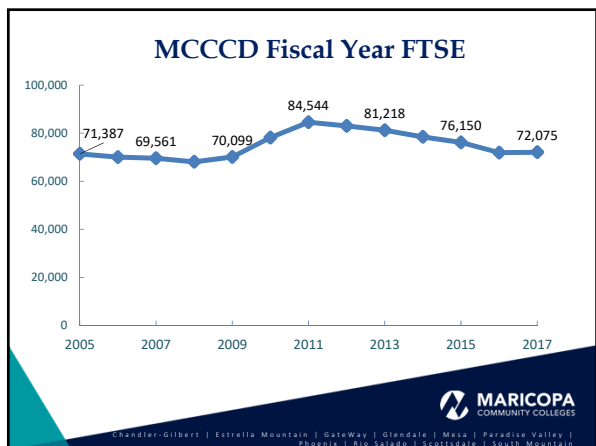
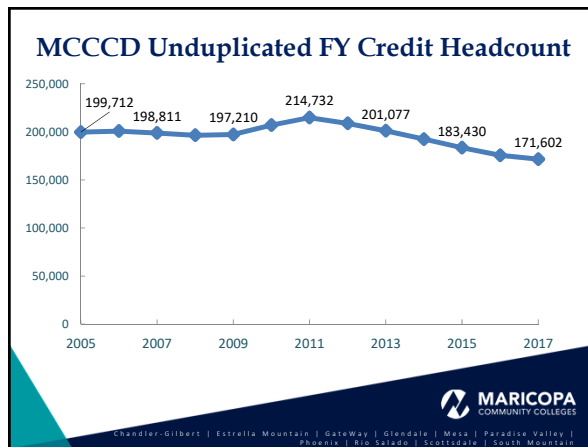
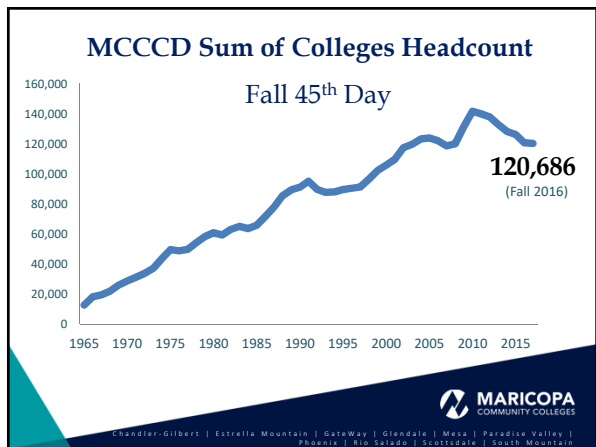
---

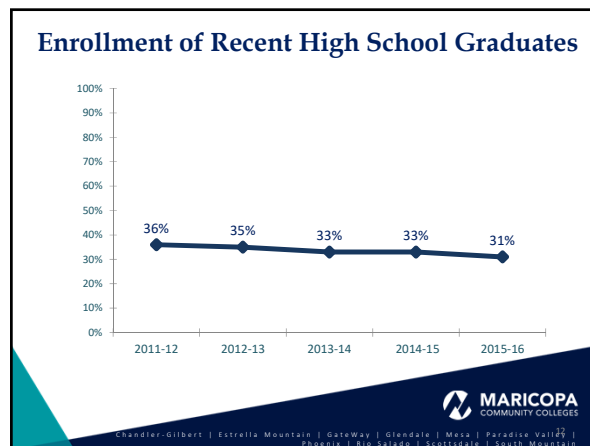
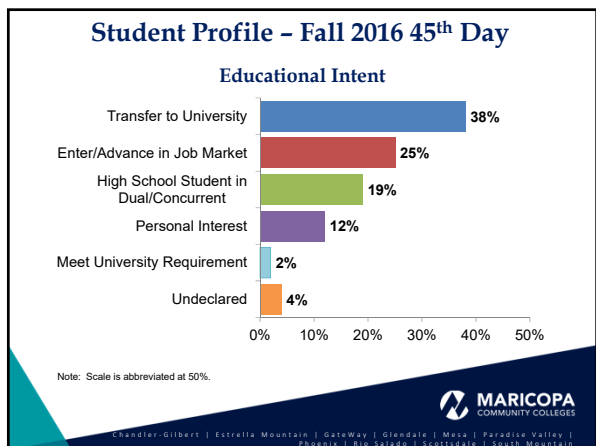
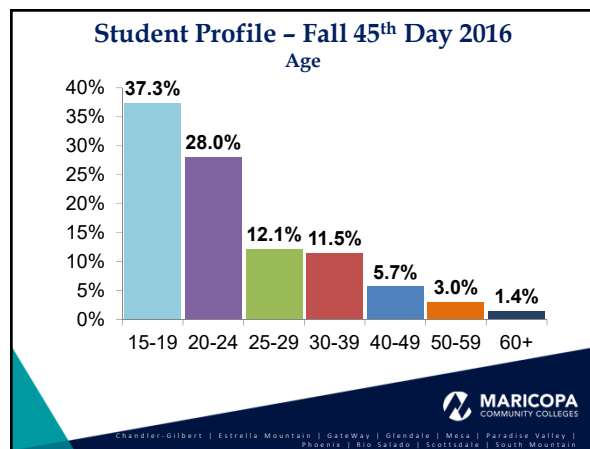
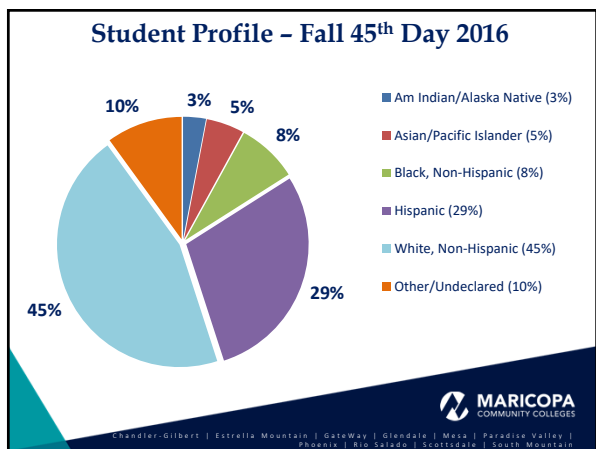
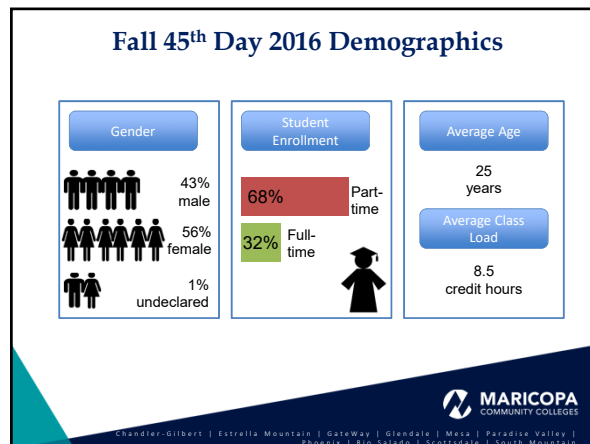
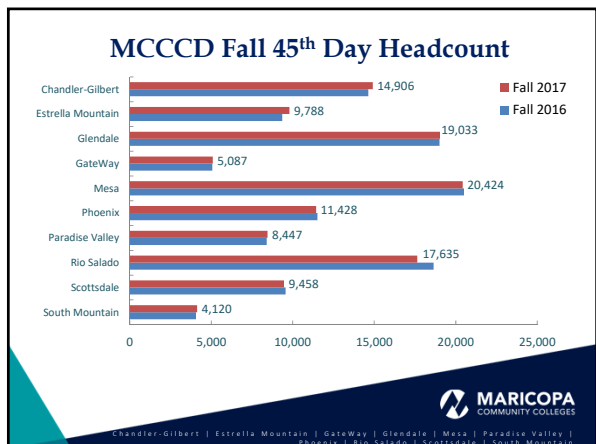
Dr. Linda Thor  
Governing Board Vice President

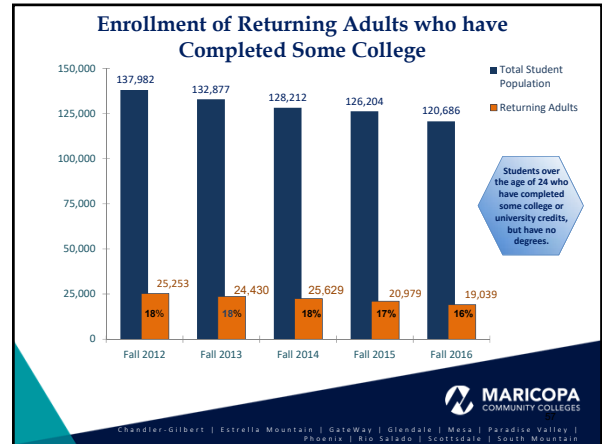
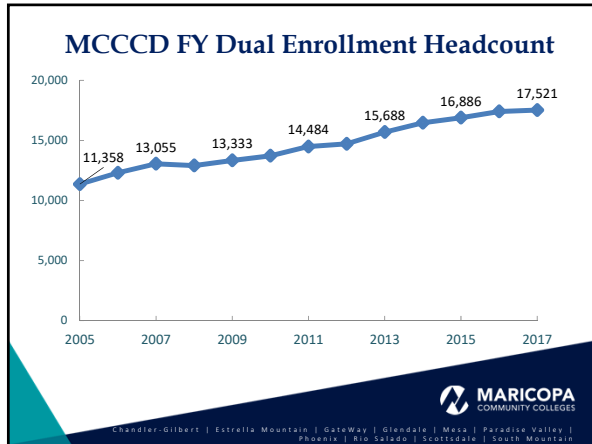
# MCCCD Governing Board 2016-17 Outcomes Report

December 5, 2017

## Who are MCCCD's students?



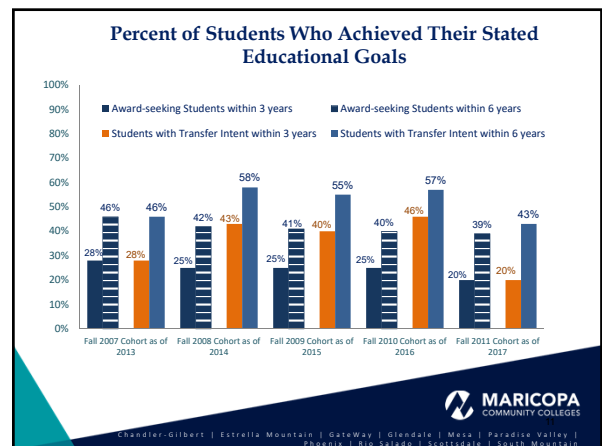
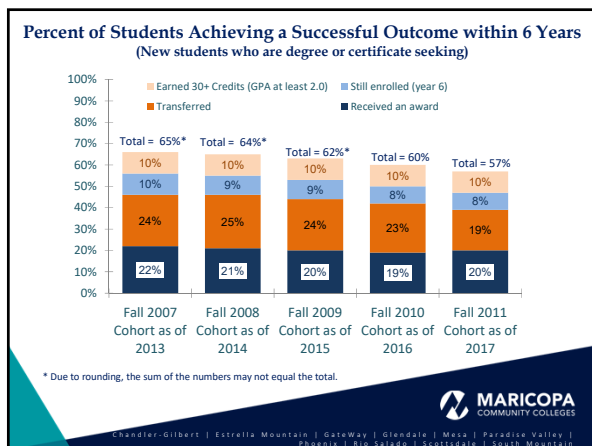




## Board Resolution:


### Increase by 50% the number of students with degrees and certificates by 2020

MARICOPA COMMUNITY COLLEGES  
Chandler-Gilbert | Estrella Mountain | GateWay | Glendale | Mesa | Paradise Valley | Phoenix | Rio Salado | Scottsdale | South Mountain




## Outcome 1

# University Transfer Education and General Education




Chandler-Gilbert | Estrella Mountain | GateWay | Glendale | Mesa | Paradise Valley | Phoenix | Rio Salado | Scottsdale | South Mountain


### Transfers to 4-year Colleges and Universities and Reverse Transfers



7,642 students with 12 or more credits from Maricopa colleges transferred to an Arizona public university in 2015-16.\*\*




44.6% of bachelor's degree recipients at ASU/U/NAU in 2015-16 (the most recent data available) had MCCCDC credits.

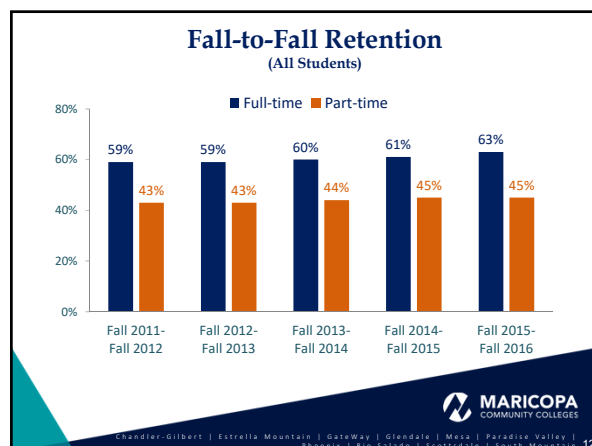
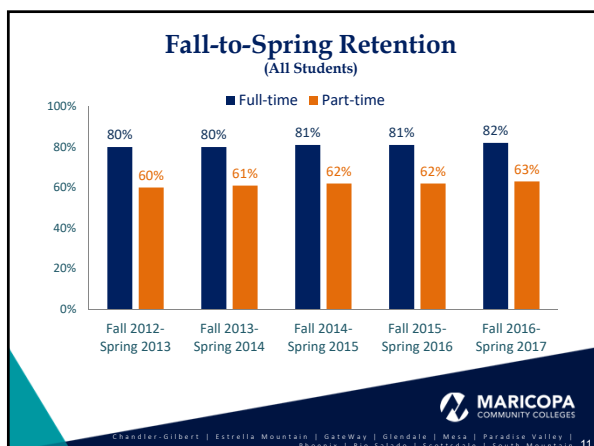
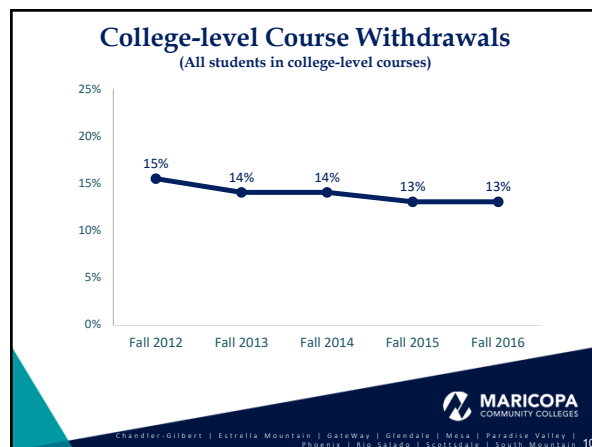
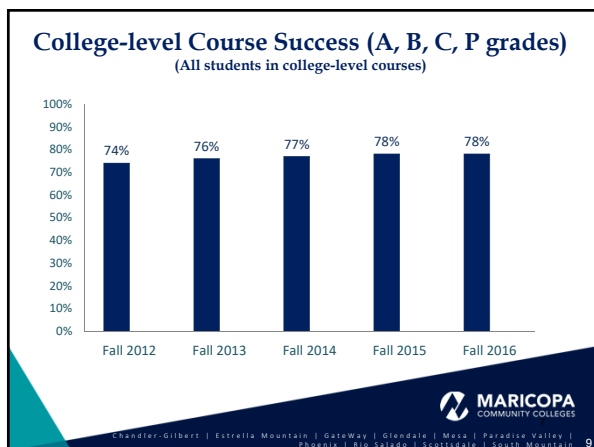


The Reverse Transfer Initiative has helped 662 students receive degrees or certificates since the program began two years ago.

Sources: \*National Student Clearinghouse  
\*\*Arizona State System for Information on Students (most recent available)




Chandler-Gilbert | Estrella Mountain | GateWay | Glendale | Mesa | Paradise Valley | Phoenix | Rio Salado | Scottsdale | South Mountain

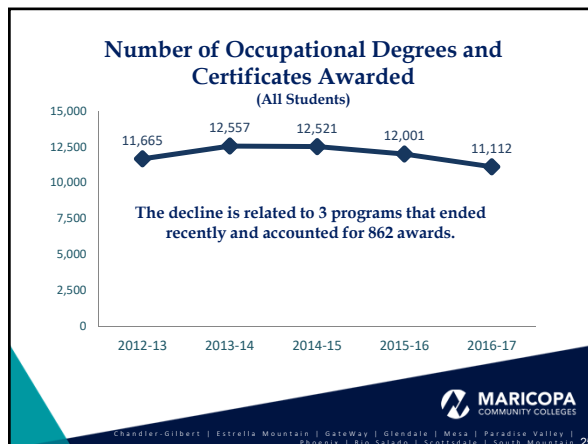


## Outcome 2

# Workforce and Economic Development




Chandler-Gilbert | Estrella Mountain | GateWay | Glendale | Mesa | Paradise Valley | Phoenix | Rio Salado | Scottsdale | South Mountain



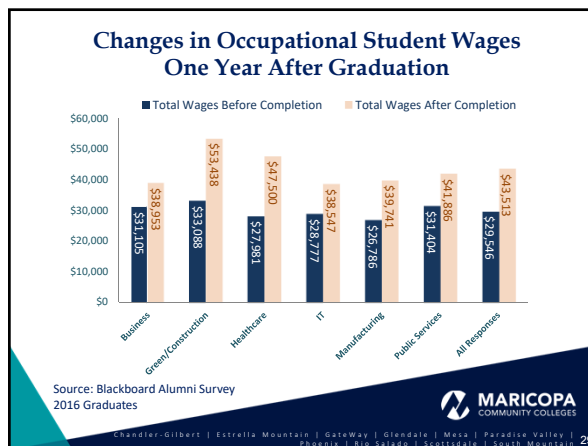
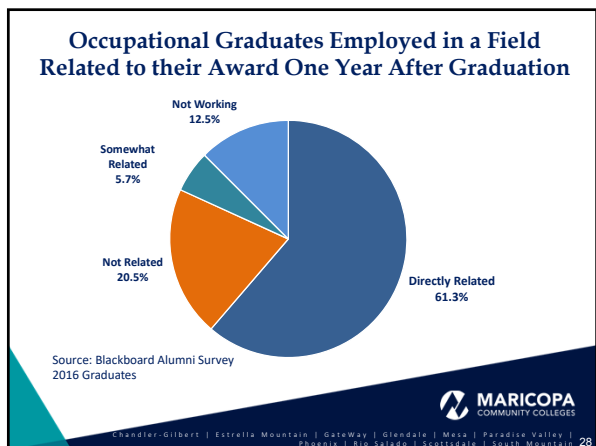
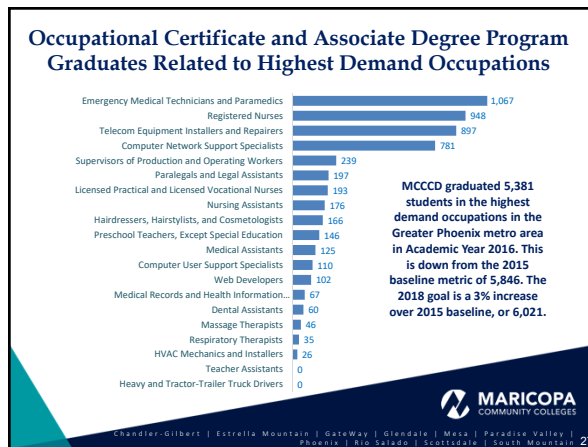
### Highest-Demand Occupations with MCCCD Degrees and Certificates

Occupation	Credit Program
Registered Nurses	Yes
Teacher Assistants	Yes
Nursing Assistants	Yes
Heavy and Tractor-Trailer Truck Drivers	No
Computer User Support Specialists	Yes
Medical Assistants	Yes
Heating, Air Conditioning, and Refrigeration Mechanics and Installers	Yes
Preschool Teachers, Except Special Education	Yes
Computer Network Support Specialists	Yes
Massage Therapists	Yes
Medical Records and Health Information Technicians	Yes
Web Developers	Yes
Licensed Practical and Licensed Vocational Nurses	Yes
Hairdressers, Hairstylists, and Cosmetologists	Yes
Paralegals and Legal Assistants	Yes
First-Line Supervisors of Production and Operating Workers	Yes
Emergency Medical Technicians and Paramedics	Yes
Dental Assistants	Yes
Telecommunications Equipment Installers & Repairers, Except Line Installers	Yes
Respiratory Therapists	Yes

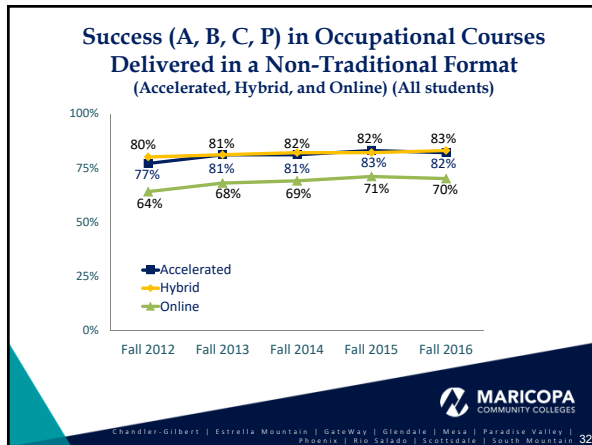
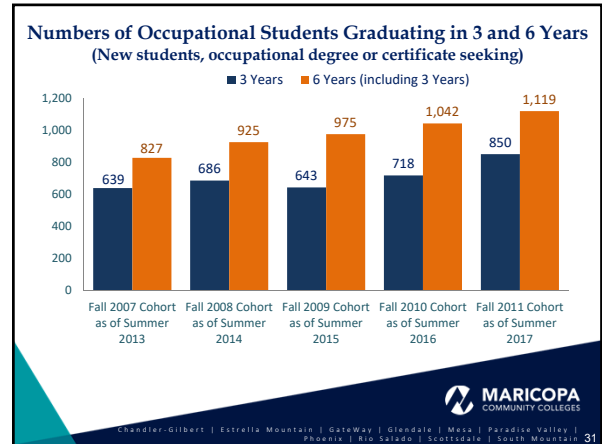
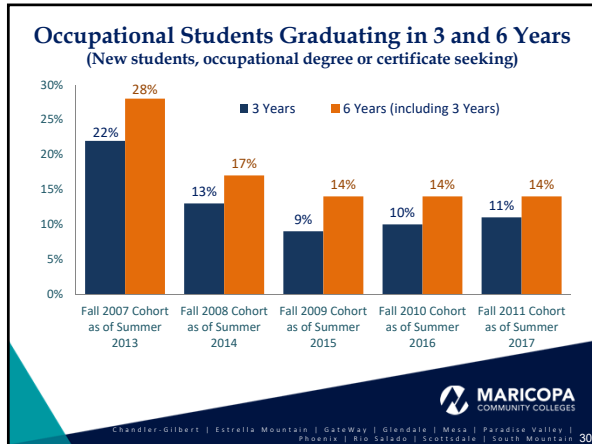
MCCCD offers credit programs in 95% of the highest-demand occupations (projected 10-year increase in jobs at the sub-baccalaureate level) in the greater Phoenix metropolitan area.



Chandler-Gilbert | Estrella Mountain | GateWay | Glendale | Mesa | Paradise Valley | Phoenix | Rio Salado | Scottsdale | South Mountain



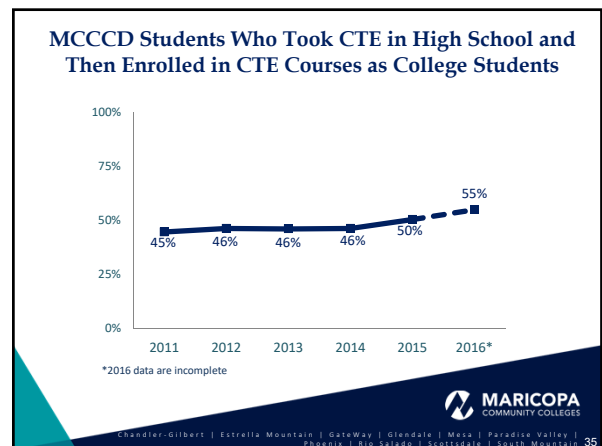
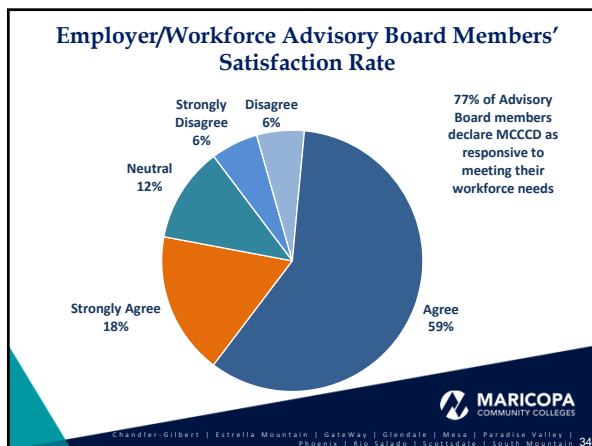


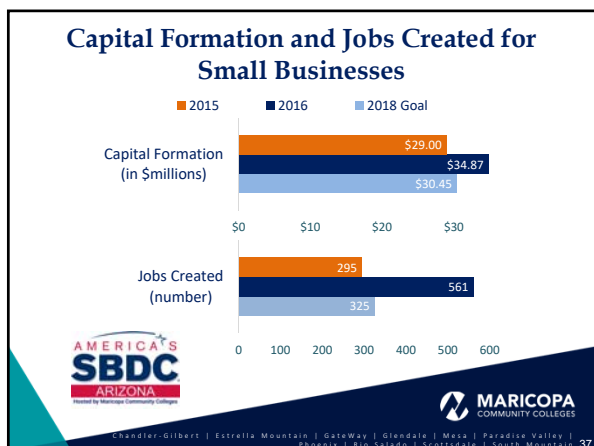


### Response Time to Business and Industry Workforce Needs

- An accelerated approval process is in place for new Occupational Programs which reduced the timeframe from 15 or more days for Occupational administrators to review submissions down to 10 days, with another 10 days for final approval.
- Fast-track grants curriculum approval process put in place for curricula directly related to grant requirements.

MARICOPA COMMUNITY COLLEGES  
Chandler-Gilbert | Estrella Mountain | GateWay | Glendale | Mesa | Paradise Valley | Phoenix | Rio Salado | Scottsdale | South Mountain

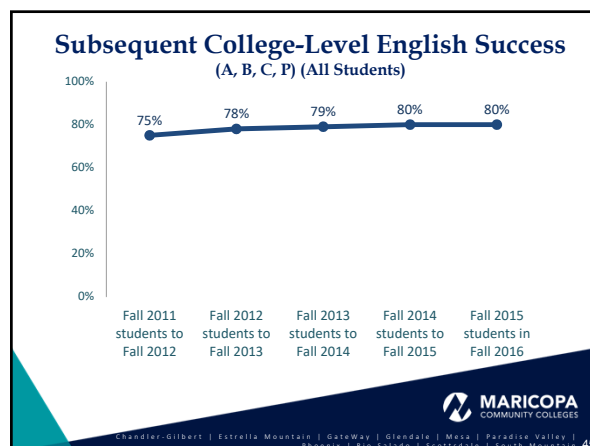
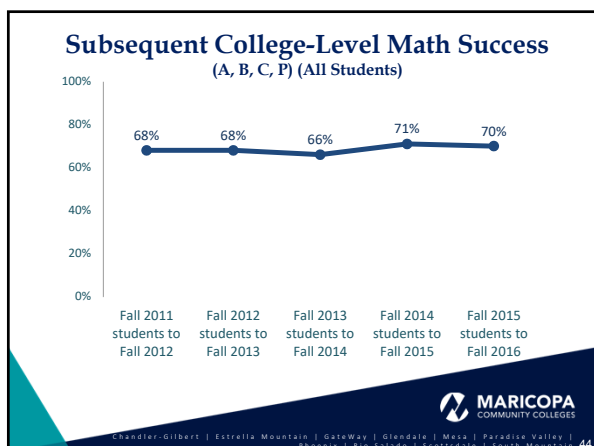
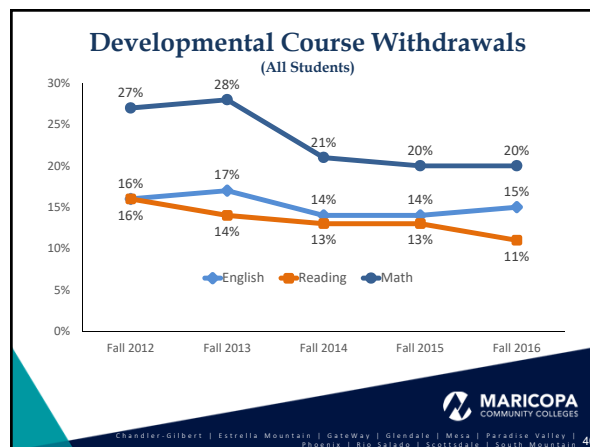
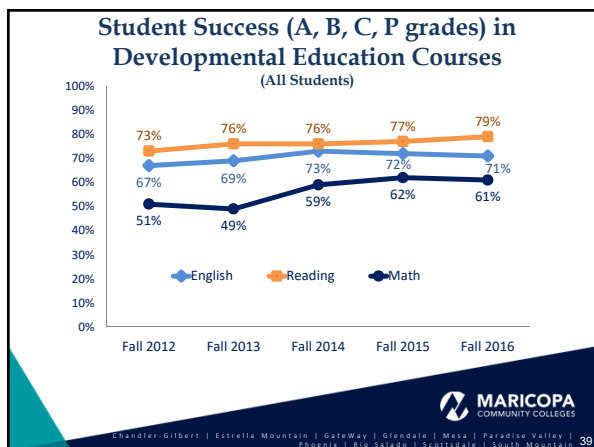


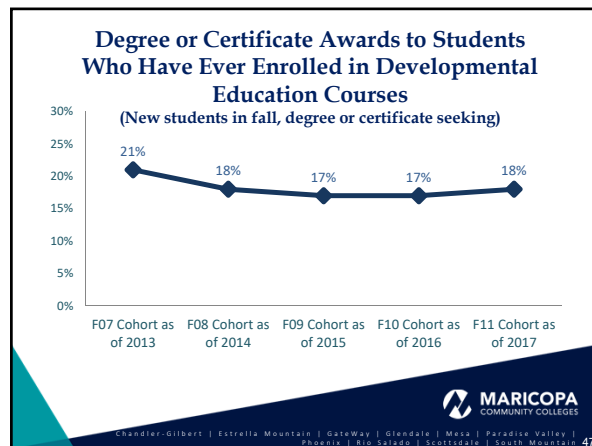
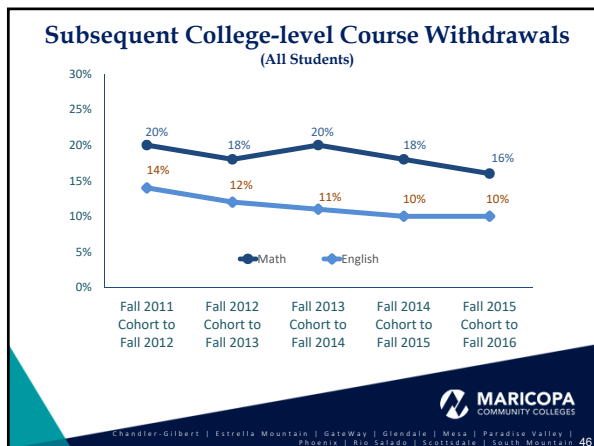


## Outcome 3

# Developmental Education

MARICOPA COMMUNITY COLLEGES





## Outcome 4 Community Development and Civic and Global Engagement

MARICOPA COMMUNITY COLLEGES  
Chandler-Gilbert | Estrella Mountain | GateWay | Glendale | Mesa | Paradise Valley | Phoenix | Rio Salado | Scottsdale | South Mountain

### Civic and Global Engagement

- 168** MCCC students participated in study abroad programs in FY 2016-17.
- 576** Activities held on MCCC campuses in FY 2016-17 that addressed civic or global learning subjects.
- 5,714** MCCC students participated in service learning opportunities in FY 2016-17.
- 1,950** International students were enrolled at MCCC in FY 2016-17.

MARICOPA COMMUNITY COLLEGES  
Chandler-Gilbert | Estrella Mountain | GateWay | Glendale | Mesa | Paradise Valley | Phoenix | Rio Salado | Scottsdale | South Mountain 50

# Questions?

MARICOPA COMMUNITY COLLEGES  
Chandler-Gilbert | Estrella Mountain | GateWay | Glendale | Mesa | Paradise Valley | Phoenix | Rio Salado | Scottsdale | South Mountain